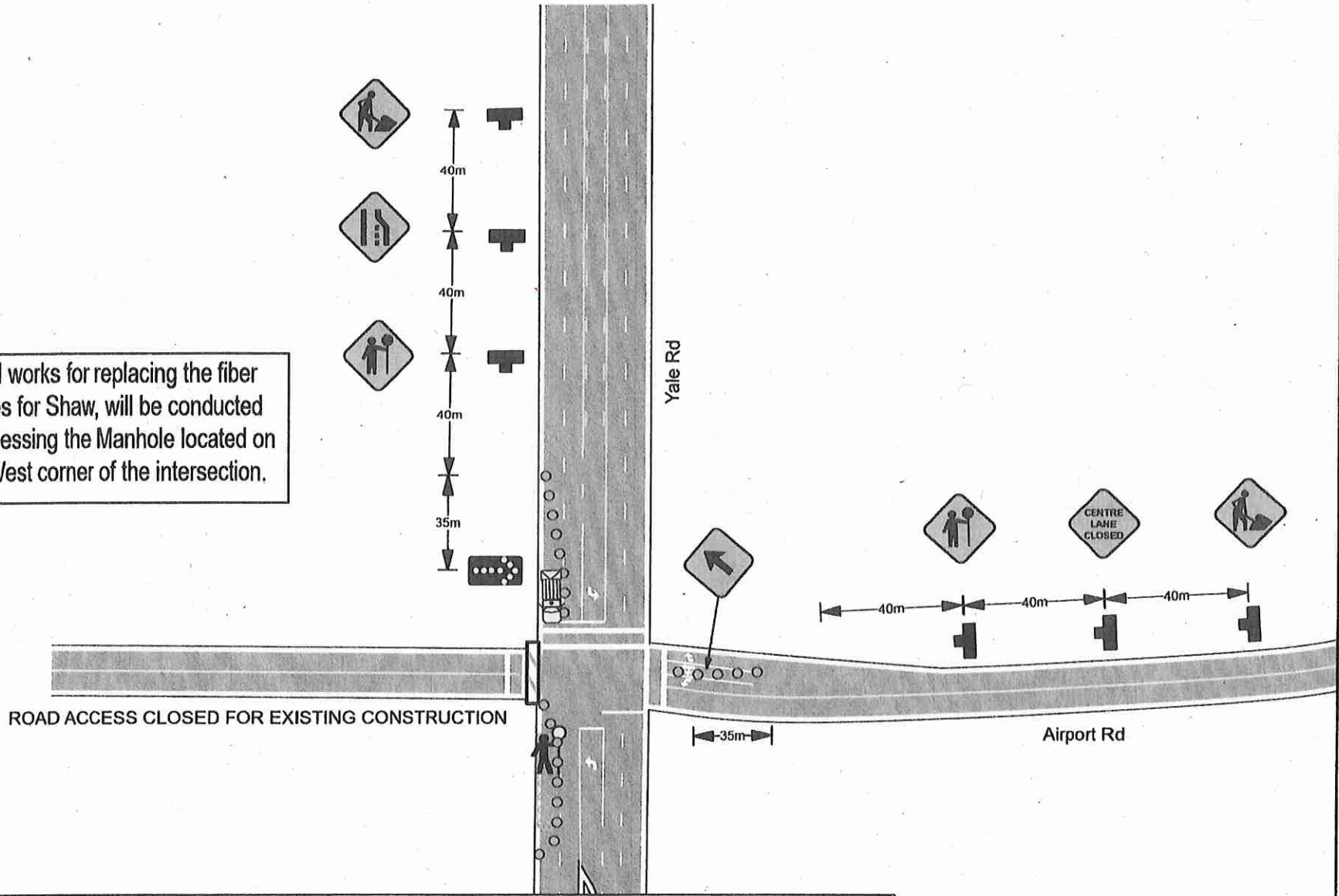


NOTE: road works for replacing the fiber optics cables for Shaw, will be conducted through accessing the Manhole located on the South West corner of the intersection.



	Date: 7/20/2017 Author: LG Project: BreakWater Contracting Yale Rd @ Airport Rd, Chilliwack: TMP
	Comments: MOT Figure 11.8: Right Lane Closure (far side) - Multilane intersection - Short and Long Duration ▲
	Tentative Work Schedule: Tuesday, July 25, 2017 from 8am-5pm.